

# 联络通道钢管片

## Steel segment

江苏银旭隧道机械有限公司  
Jiangsu Yinxu Tunnelling Machinery Co.,Ltd.

# 目 录

## Catalogue

- ◎ 公司简介  
Company profile
- ◎ 资质及荣誉  
Qualification and honor
- ◎ 产品介绍  
Product introduction
- ◎ 产品应用  
Product application
- ◎ 特殊衬砌环加工工艺流程  
Machining process of special lining ring
- ◎ 产品优势  
Product advantages
- ◎ 公司业绩  
Results





## 公司简介

江苏银旭隧道机械有限公司是一家专业从事地铁隧道配套设备研发、设计、生产、销售为一体的科技型企业，地处江苏省苏州市吴江区太湖新城，紧邻S227省道与京杭大运河，临近苏嘉杭高速吴江南出口，交通便利，地理位置优越。

我公司获得的各项荣誉有：高新技术企业、江苏省优质产品、全国质量信得过单位、全国AAA级诚信单位、江苏省民营科技企业、江苏省科技型中小企业、苏州市重合同守信用企业。

我公司联合科研院校成立企业研发中心，研发异型盾构掘进机、小型盾构掘进机。公司研发的顶管掘进机分别在2011年、2012年通过中国机械联合会科学技术成果鉴定，项目成果填补国内空白，达到国际先进水平。2013年我公司承担了江苏省科技支撑项目—土压平衡矩形盾构机的关键技术研究。公司现生产有过街通道、市政给排水管道、电力电缆隧道顶管机，地铁联络通道钢管片，盾构管片钢模等隧道工程配套产品。

公司本着“精益求精、真诚服务、品质第一、诚信合作”的精神，不断发展壮大，拥有完善的加工设备和一流的技术队伍，所生产的精品隧道配套产品在上海、天津、沈阳、成都、武汉、杭州、苏州、无锡、宁波、昆明、南京、福州、石家庄、北京等城市地铁项目及广深港客运专线、兰新高铁项目中发挥了重要作用。公司不断致力于隧道工程配套机械装备事业中，打造隧道行业的品牌。



# Company Profile

Jiangsu Yinxu Tunnelling Machinery Co.,Ltd. is a professional private technology enterprise which integrate the subway tunnel equipment R&D、 design、 production and sale. It is located in Wujiang Taihu New Town , Suzhou City, Jiangsu Province, close to S227 Provincial Highway and the Beijing-Hangzhou Grand Canal, and near the Sujia-hang high-speed Wujiang south export, with convenient transportation and favorable geographical position.

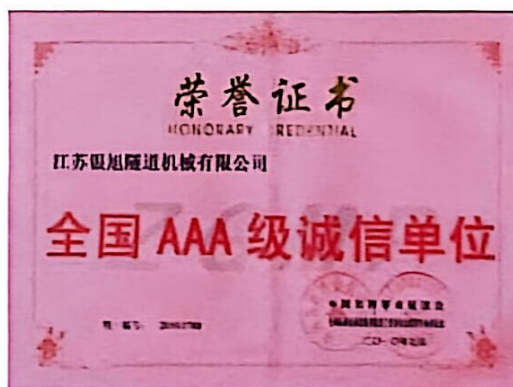
The company has received various honors: High-tech enterprises、 High-quality Products in Jiangsu Province、 National Quality Trustworthy Unit、 the National AAA Grade Credit Unit、 Private Scientific and Technological Enterprise、 High-tech SME in Jiangsu Province and Contract and Trustworthy Enterprise in Suzhou City.

The company has established R&D center in association with professional research institutions to develop shaped shield tunneling machine and small shield tunneling machine. Our pipe jacking machine has passed the China Machinery Industry Federation scientific and technological achievements appraisal respectively in 2011 and 2012 which filled the domestic gaps and reached the international advanced level. In 2013, it undertook scientific and technological support projects - the key technology research of earth pressure balance rectangular shield machine. Now, the company has produced pipe jacking tunneling machine for underpass、 government drainage sewer、 power cable tunnel, steel segment for tunnel and subway、 steel mould for concrete segment and other tunnel ancillary products.

The company follows the enterprise spirit of “endless striving for excellence, sincere service, quality first, honest cooperation”, and develop continually, with a sound processing equipment and first-class technical team. It produced boutique tunnel ancillary products that played an important role in cities metro project, such as Shanghai、 Tianjin、 Chengdu、 Wuhan、 Hangzhou、 Suzhou、 Wuxi、 Ningbo、 Kunming、 Nanjing、 Shenyang,Guangzhou-Shenzhen-Hong Kong Express Rail Link and Lanxin railway project. The company is determined to continue work in business of highway、 railway 、 tunnel and many other urban construction engineering machinery and equipments, and to build a tunnel industry brand.

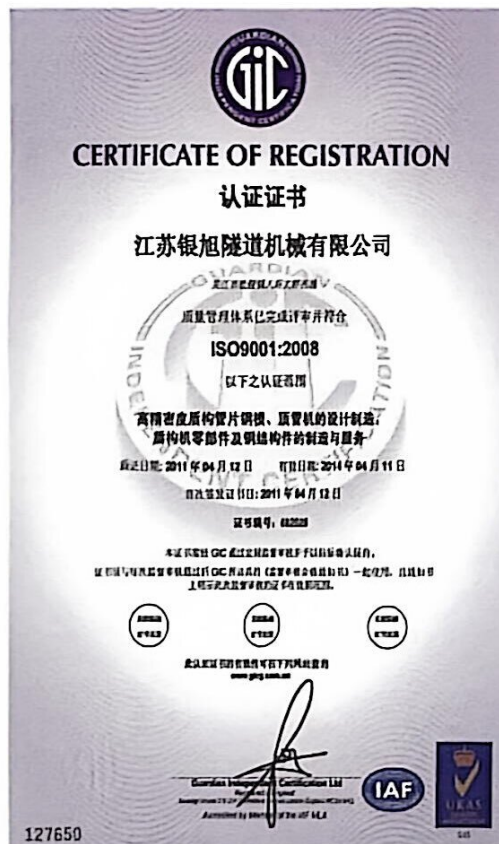
# 资质及荣誉

## Qualification and honor



# 资质及荣誉

## Qualification and honor

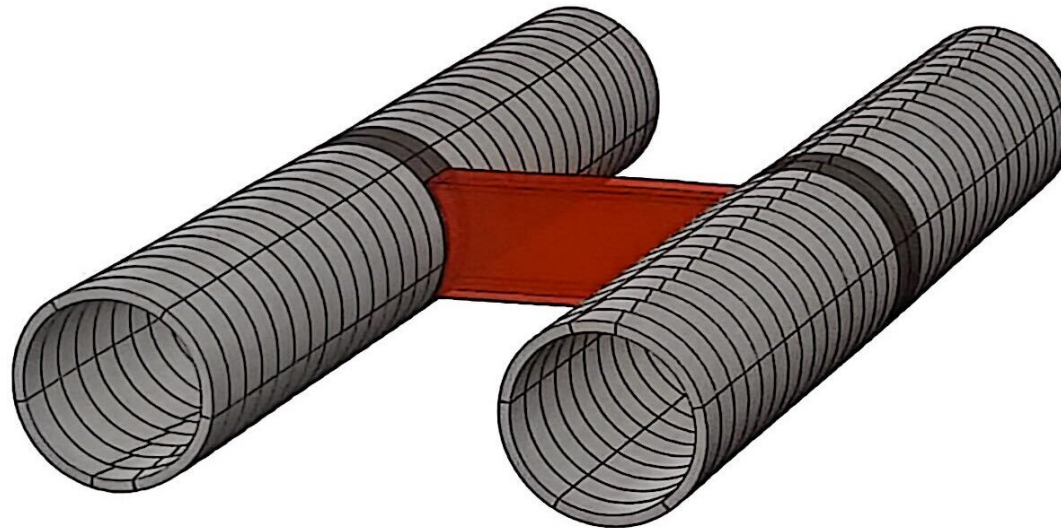


## Product introduction-tunnel steel segment



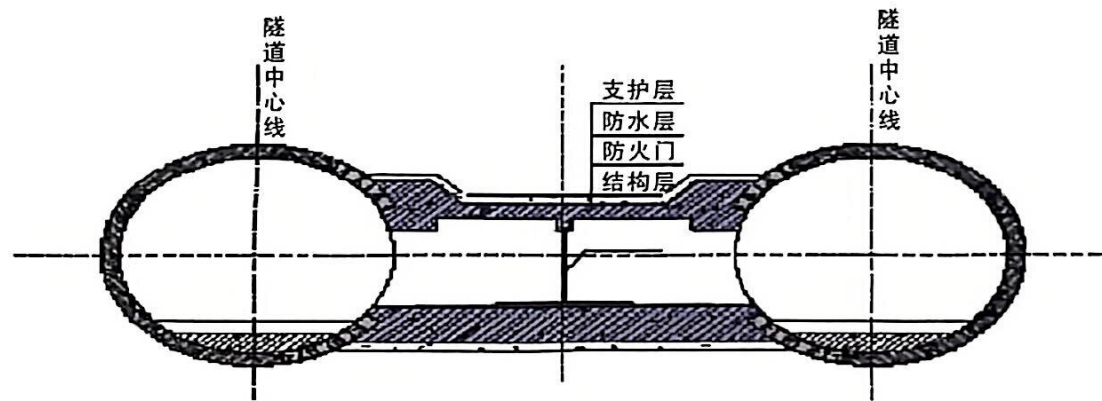
Tunnel steel segment, also known as special lining ring shield steel segment is installed in the subway tunnel between two stations (link two tunnels, for fire escape and maintenance) at a special tube segment segment.

## Applications



Steel segment is mainly used in special segments and liaison channel at the entrance for shield tunneling, depending on the requirements of engineering and design can be divided into the whole loop steel segment stitching and blending with concrete segments form.

## Contact tunnel structure

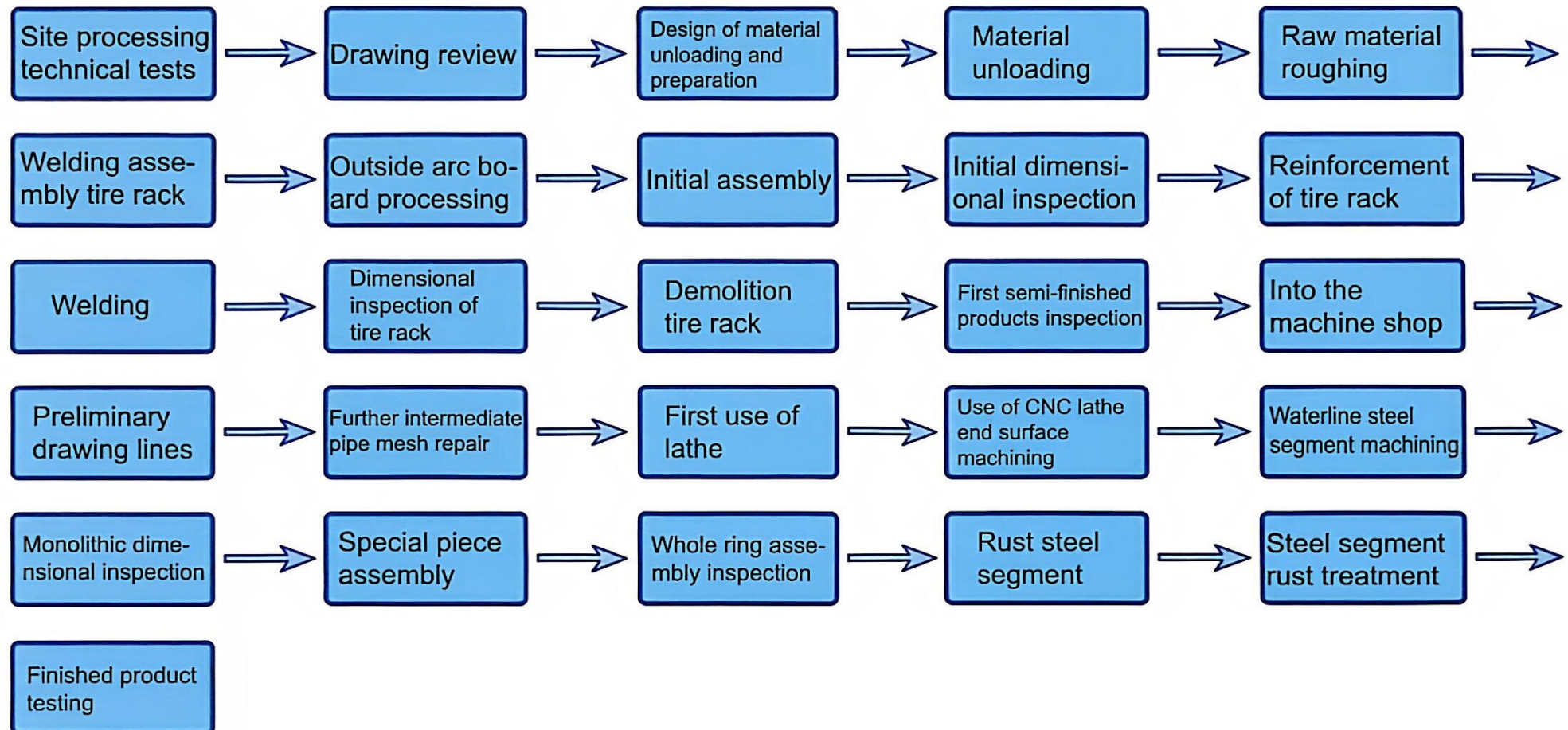


Contact tunnel design



Contact tunnel forming

## Machining process of special lining ring



## Product advantages

### ◎ Team strengths

- Professional production team, with more than 8 years experience in production and processing of steel segment, familiar with all domestic steel segment tunnel design and production requirements.

# ADVANTAGE



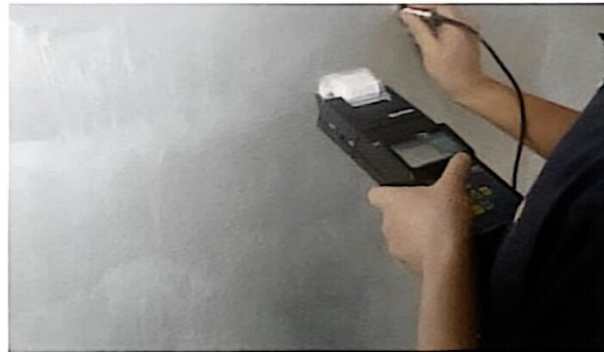
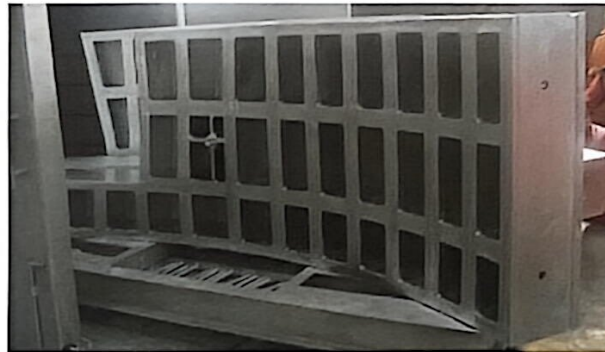
# TEAM



# MANUFACTURING ADVANTAGE

## ◎ Manufacturing advantages

- Steel segment structure produced using CNC technology , modular and tooling of manufacturing, inspection and control the whole process of tracking, to ensure the welding quality, overall dimensions.
- Using CNC gantry machining to complete, to ensure high dimensional accuracy, type surface finish requirements and etc.
- The exclusive introduction steel segment DACRCOMET spray technology, 100 year anti-corrosion guarantee



◎ **Quality advantages**

- Company produces steel segment can guarantee once assembled qualified, delivery customers.





In 2009, the company introduced a new special surface treatment technology - DACROMET, which compared with the traditional plating process, DACROMET is a "green plating". It has superior corrosion resistance, no hydrogen embrittlement resistance, high heat resistance, good permeability, reapply good combination of strength and performance, no pollution and other advantages of this technology to fill the gaps.

Steel segment zinc chromate coating - DACROMET Technology

## Results



Our company provides high-quality steel segment for domestic subway tunnel project, on the production process, we constantly sum up experience, worked out a complete steel segment production process. The products have covered many cities including Shanghai, Guangzhou, Shenyang, Tianjin, Wuhan, Hangzhou, Suzhou, Wuxi, Kunming, Ningbo, Nanjing and other cities, won the praise of many customers, became the first brand of steel segment.

◎ **2007 results:**

Shanghai Shangzhong cross-river tunnel diameter 14.5 m steel segment

Guangzhou-Shenzhen-Hong Kong Passenger Shiziyang tunnel steel segment

2002 ~ 2007 Shanghai Metro Line Pipe piece 2,7,8,9,10

Wuhan Metro Line 2 steel segment

Shenyang Metro steel segment

Chengdu Metro steel segment

◎ **2008 results:**

Tianjin Metro steel segment

Hangzhou Metro steel segment

Wuhan Metro Line 2 steel segment

Suzhou Subway steel segment

Wuhan steel segment river tunnel



◎ **2009 results:**

Wuhan Metro Line 2 steel segment  
Wuhan steel segment river tunnel  
Suzhou Subway steel segment  
Hangzhou Metro steel segment  
Tianjin Metro steel segment

◎ **2010 results:**

Wuhan Metro Line 4 steel segment  
Suzhou Subway steel segment  
Kunming subway steel segment  
Tianjin Metro steel segment  
Wuxi metro steel segment

◎ **2011 results:**

Suzhou Subway steel segment  
Kunming subway steel segment  
Wuxi metro steel segment  
Wuhan Metro Line 4 steel segment  
Wuhan steel segment river tunnel



◎ **2012 results:**

Wuxi metro steel segment

Kunming subway steel segment

Wuhan Metro Line 4 steel segment

Ningbo Metro steel segment

Nanjing Weisan road cross-river tunnel steel segment

◎ **2013 results:**

Wuxi metro steel segment

Suzhou Subway steel segment

Kunming subway steel segment

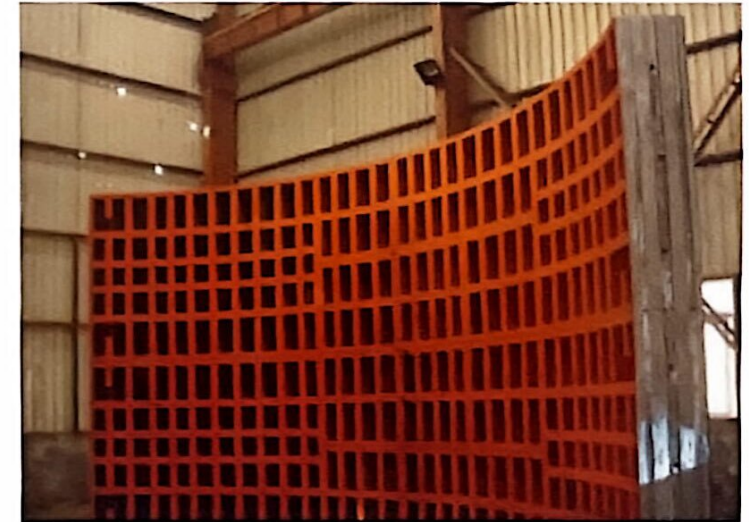
Wuhan Metro Line 3 steel segment

Fuzhou subway steel segment

Hangzhou Metro steel segment

## Guangzhou-Shenzhen-Hong Kong Passenger Shiziyang tunnel steel segment

# SHIZIYANG

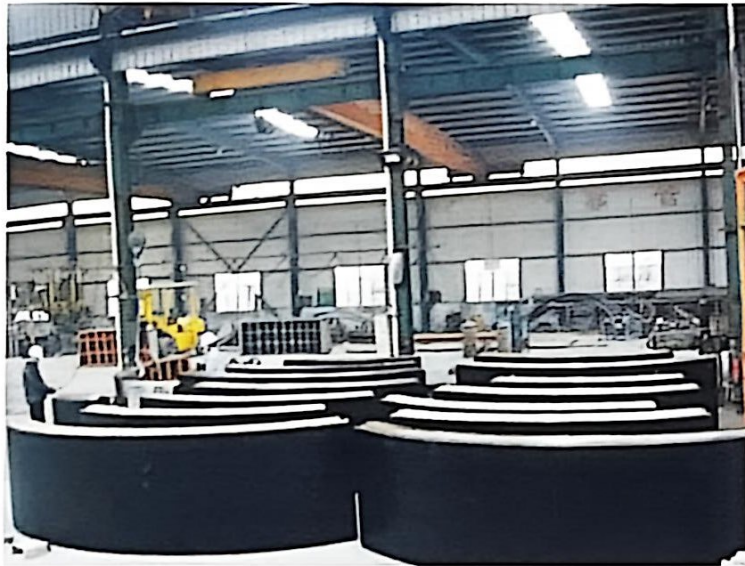


Features: Large diameter (diameter 11.4 m);  
Blending with concrete segments, tours with a  
wedge-shaped volume, belong to generic ring  
segments, a relatively complicated process.

Cooperation company: China Railway12TH Bureau Group Co., Ltd.

Cooperation company: China Railway twenty-three Bureau Group Co., Ltd.  
Shanghai Tunnel Engineering Co., Ltd.

# SHANGHAI



Features: 4 ring in which two entire ring, two half-rings (each blending with concrete , torus bump falcon, section positioning rod hole slot), a total of 18 pieces, more than 50 tons / sets, long processing cycles.



Shanghai metro steel segment



Chengdu metro steel segment

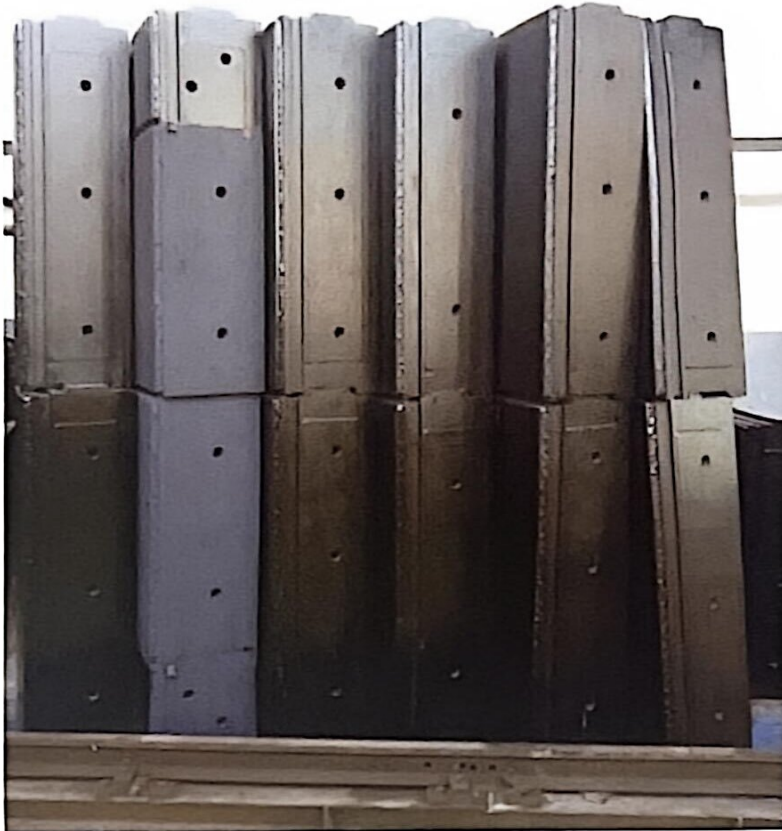


**Cooperation company:**

China Railway twenty-three Bureau Group Co., Ltd.  
Chengdu SAMA Science & Technology Development Co., Ltd.  
China Railway First Bureau Group Co., Ltd.

# CHENGDU

Features: 2 full ring, a total of 12 pieces, plus epoxy zinc-rich epoxy primer sealer coat.



**Features:**

2 whole ring, a total of 12 pieces, zinc-rich epoxy paint coatings and epoxy sealer coat technology, strong structure corrosion resistance.

**Cooperation company:**

**TIANJIN**

China Railway First Bureau Group Co., Ltd.

Sinohydro Bureau 14 Co., Ltd.

China Railway Tunnel Group Co., Ltd.



Tianjin metro steel segment

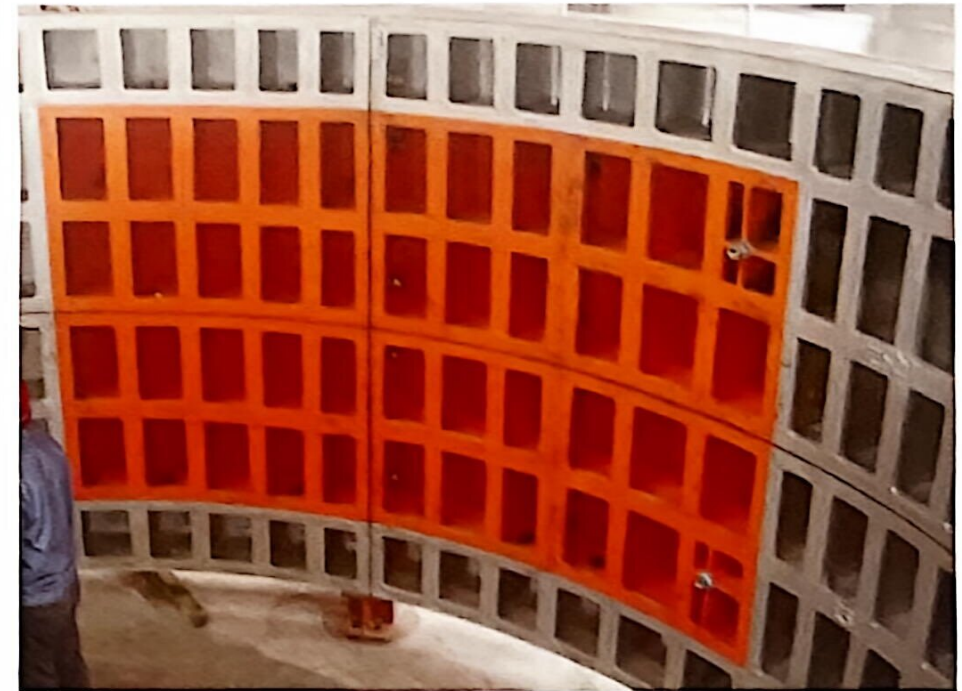


Features: 2 rings, blending with concrete segments, anti-corrosion coating materials plus zinc chromate coating epoxy closed. Need to have to coax coated zinc chromate coating equipment.

**Cooperation company:**

Suzhou Jianjia Construction Component Products Co. Ltd.

Suzhou Sanjia Traffic Engineering Prestressed Co. Ltd.



# SUZHOU

Suzhou metro steel segment

**Cooperation company:**

China Railway 11th Bureau Group Co., Ltd.

China Railway 16th Bureau Group Co., Ltd.

China Railway Fourth Bureau Group Co., Ltd.

China Railway Second Bureau Group Co., Ltd.



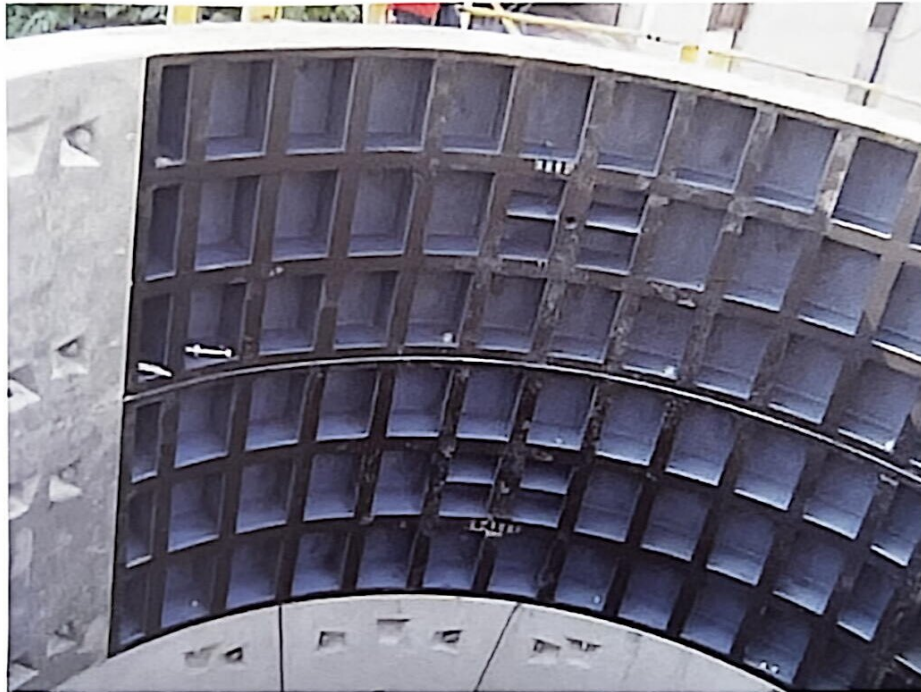
Features: 4 rings, each blending with concrete segments , high precision. Torus bump falcon, end surface positioning rod hole slot.

# HANGZHOU



Hangzhou metro steel segment

# WUHAN



## Cooperation company:

China Railway First Bureau Group Co., Ltd.

China Railway Tunnel Group Co., Ltd.

Wuhan metro steel segment



Features: 2 rings are mixed with concrete segments fight, 43mm wedge torus volume. Coax coating technology using zinc chromate coating applied epoxy sealer coat. In addition to precision requirements, have a high anti-corrosion construction requirements.

# KUNMING



Features: 2 rings are mixed with concrete segments fight, wedge-shaped torus volume. Coax coating technology using zinc chromate coating applied epoxy sealer coat. In addition to precision requirements, have a high anti-corrosion construction requirements.

## Cooperation company:

China Railway 11th Bureau Group Co., Ltd.

China Railway Tunnel Group Co., Ltd.

China Railway Fourth Bureau Group Co., Ltd.

China Railway Second Bureau Group Co., Ltd.

Yunnan Kunming Building Products Co. Ltd.



Kunming metro steel segment



Features: 2 full ring, a total of 12 pieces, steel segment through the slit assembly, have higher corrosion protection requirements.

WUXI

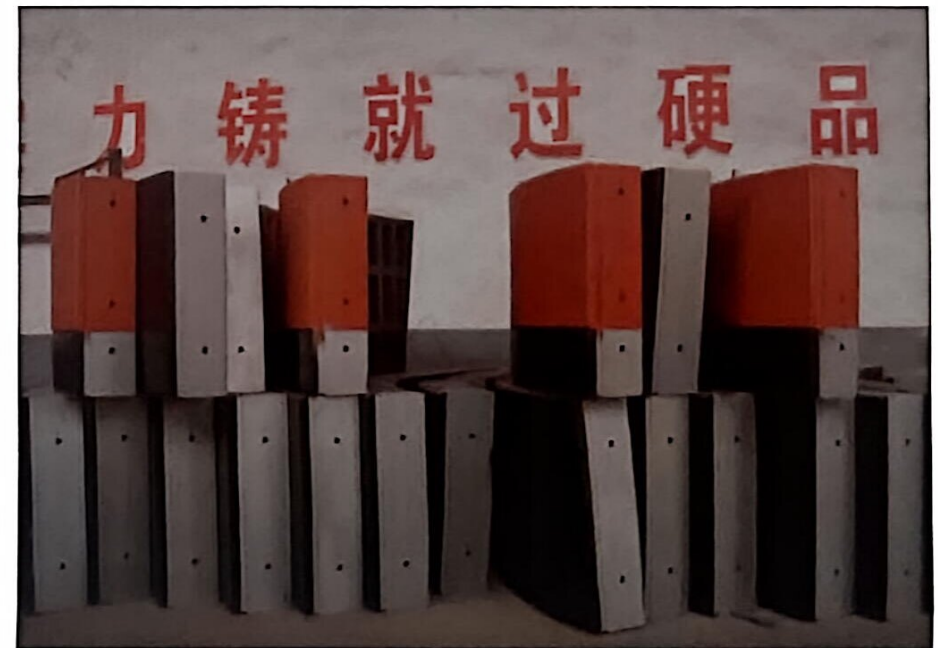
**Cooperation company:**

China Railway 11th Bureau Group Co., Ltd.

China Railway Tunnel Group Co., Ltd.

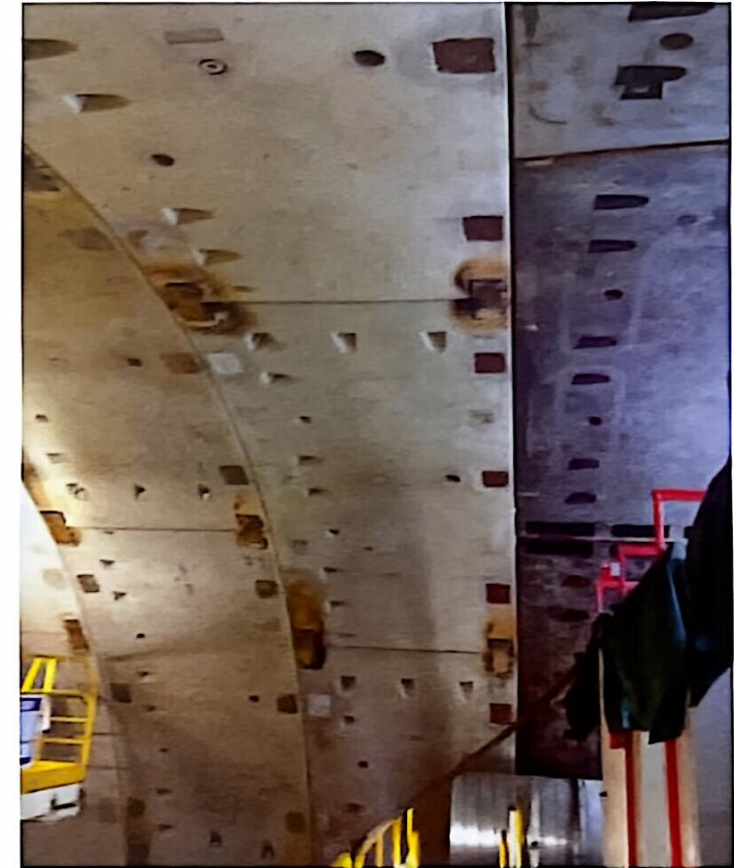
China Railway First Bureau Group Co., Ltd.

Shanghai Construction Machinery Co., Ltd.



Wuxi metro steel segment

# NANJING

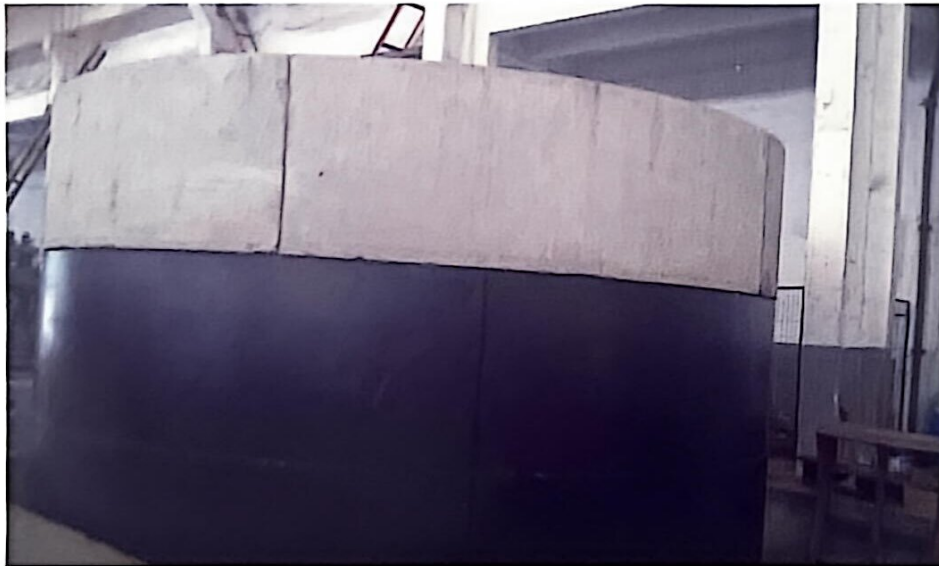


**Cooperation company:**  
CCCC-SHEC Second Engineering Co., Ltd.

**Features:** used as a negative ring, large diameter, 14.93m, high precision, high strength, good sealing requirements.

Nanjing Weisan Road cross-river tunnel steel segment

# NINGBO



Features: 4 rings, a total of 14 pieces, two full rings plus two single blocks (blending with concrete segments), weight 39 tons / sets. Blending with concrete segments of the torus into two single-block wedge, processing complex, high precision. With cold galvanizing corrosion epoxy coating plus closed, have a higher corrosion requirements.

## Cooperation company:

CCCC tunnel Engineering Bureau Co., Ltd.

China Railway Tunnel Group Co., Ltd.

China Railway Fourth Bureau Group Co., Ltd.

Shanghai Construction Machinery Co., Ltd.



Ningbo metro steel segment

**Cooperation company:**

China Railway Third Bureau Group Co., Ltd.

China Railway 19th Bureau Group Co., Ltd.

# FUZHOU

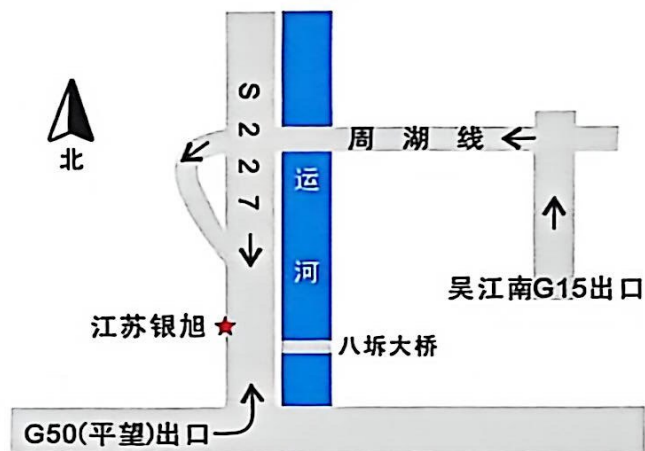


Features: 4 rings, a total of 14 pieces, two full rings plus two single blocks (blending with concrete segments), weight 39 tons / sets. Blending with concrete segments of the torus into two single-block wedge, processing complex, high precision. With cold galvanizing corrosion epoxy coating plus closed, have a higher corrosion requirements.

Fuzhou metro steel segment



Steel segment factory acceptance scene



## 江苏银旭隧道机械有限公司

Jiangsu YinXu Tunnelling Machinery Co., Ltd.

地址：江苏省苏州市吴江区太湖新城八坼大桥西逸 邮编：215222

电话：0512-63173888

传真：0512-63360833

邮箱：shyinxu@163.com

网址：www.js-yxsd.com